

# Installing the FTS Serial Driver

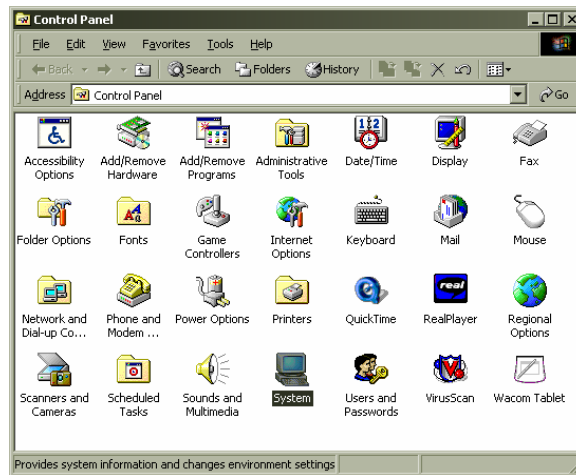
## Windows 2000 Instructions

The examples are for a National Instruments card, but they apply for any of the cards supported by FTS.

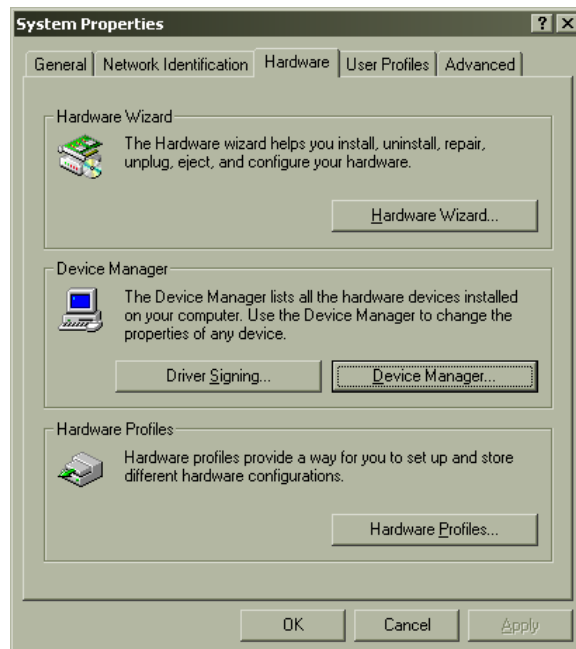
First, unzip the driver files provided. You may put them where ever you choose to; just remember where you put them.

You will use *Device Manager* to install the FTS Serial Driver.

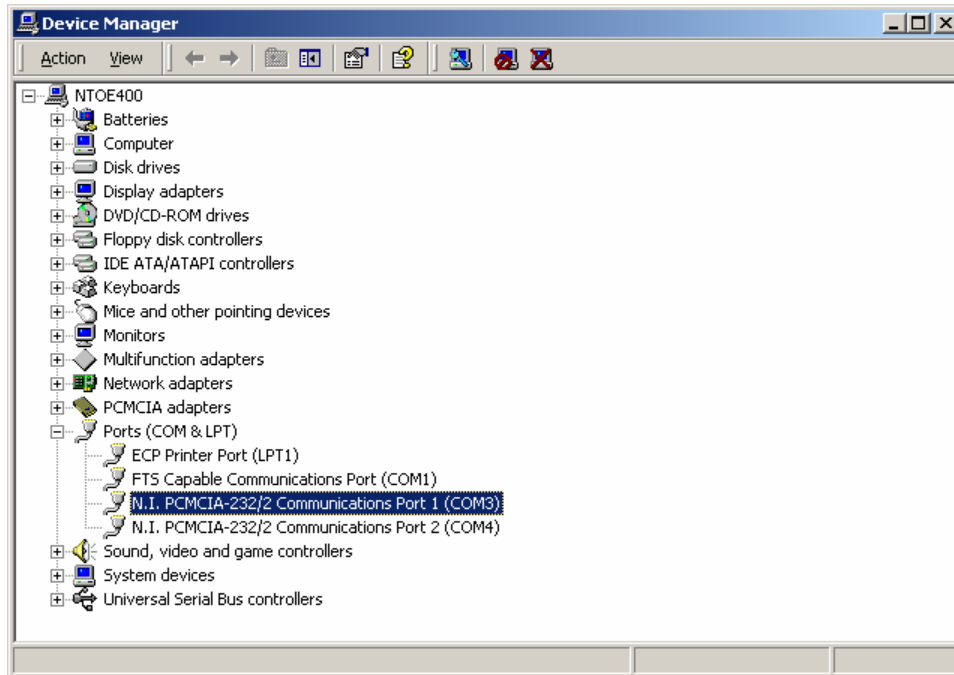
1. Open the *Control Panel* from *Settings* in the *Start* menu



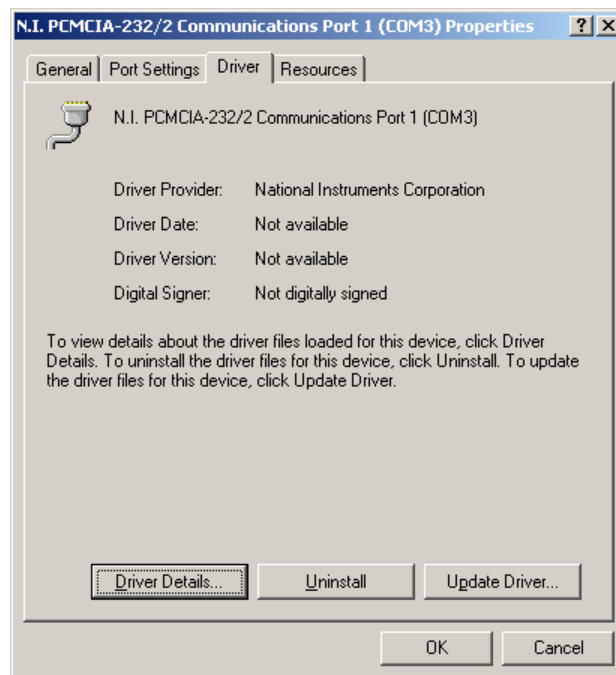
2. Double click on *System*.



3. The *System Properties* will open. Click on the *Hardware* Tab and click the *Device Manager* Button.



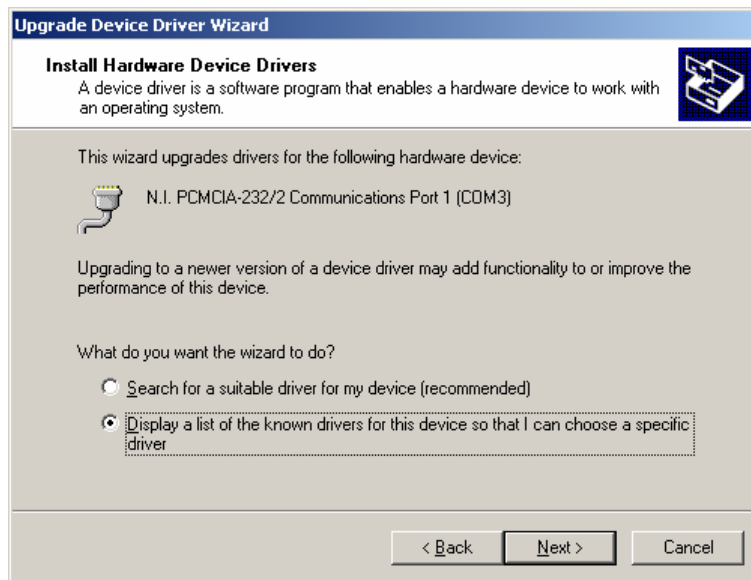
4. This will open the *Device Manager*. Double-click on *Ports* branch and double-click on the serial port you wish to switch to the FTS Driver. You can repeat these instructions for additional serial ports.



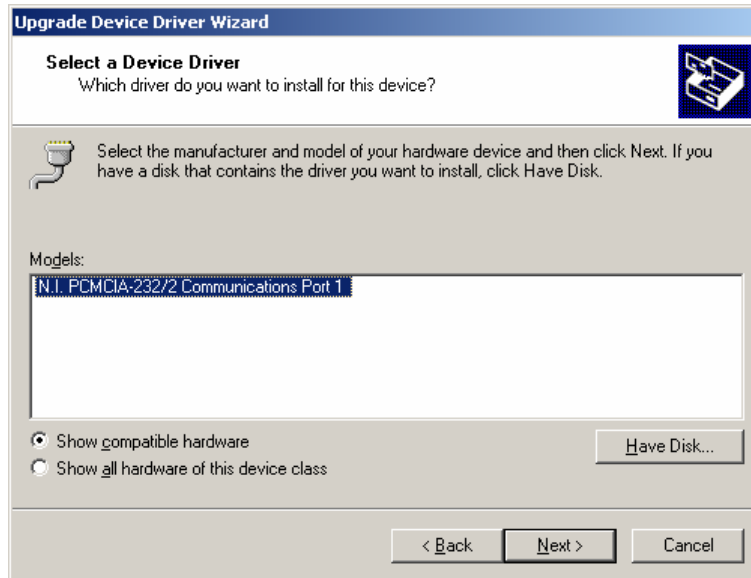
5. This will bring up the *Communication Port Properties*. Click on the *Driver* tab and click the *Update Driver* button.



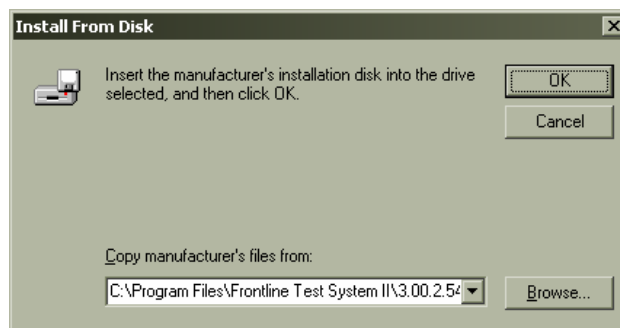
6. This will bring up the *Update Device Driver Wizard*. Click *Next*.



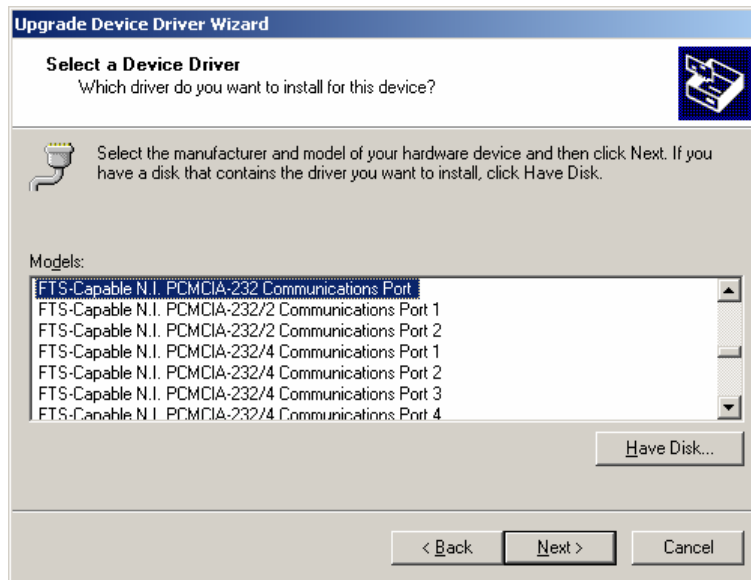
7. Select the radio button that says "Display a list of known drivers for this device so that I can choose a specific driver" and click *Next*.



8. Click the *Have Disk* button.

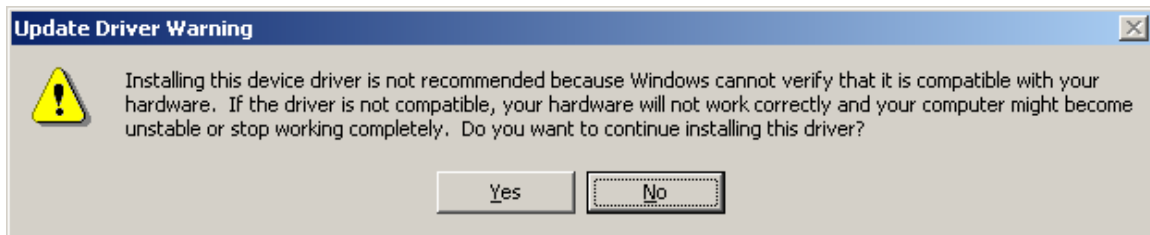


9. Browse to the location of the driver. By default it is in the C:\Program Files\Frontline Test System II\[Product Name]\asynchronous driver support\[Serial Card]\fts serial driver, [Serial Card] would be Quatech for a Quatech card, National Instruments for an NI card and misc for an internal port. Click *OK*.

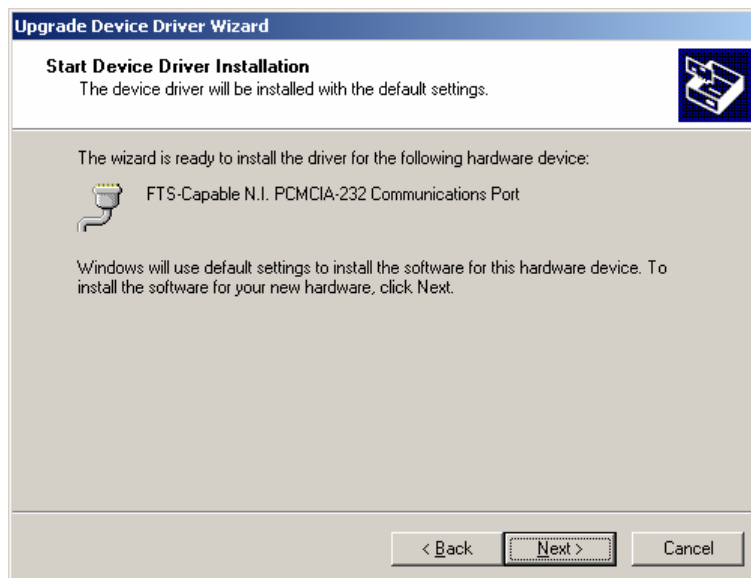


Select the driver that corresponds to your device (ISA, PCI or PCMCIA) and click *Next*.

If you see a warning such as the following:



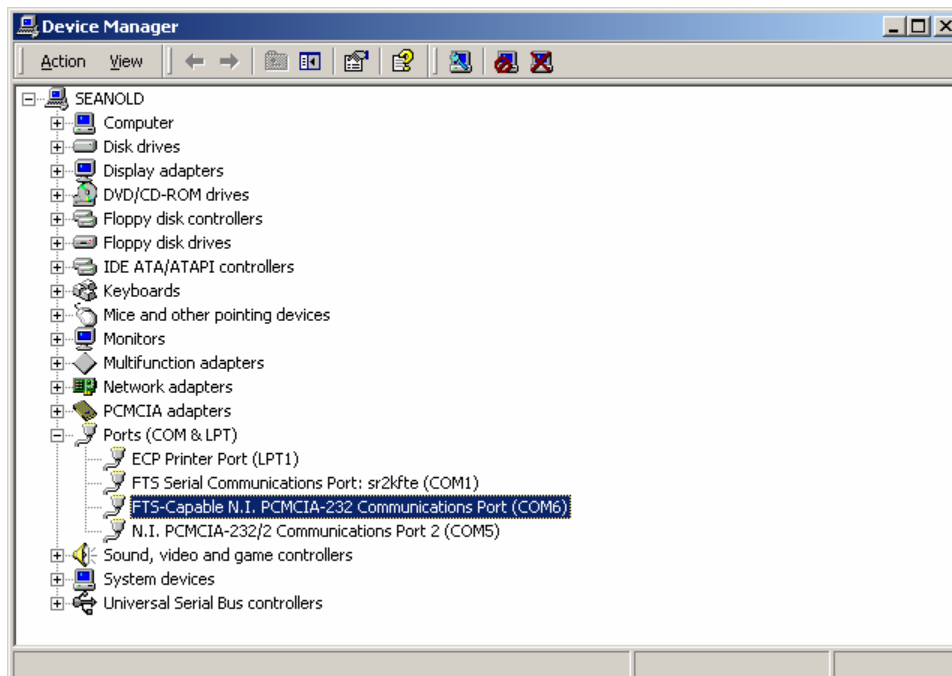
Click *Yes*.



11. Click *Next*. This may take a few seconds.



13. Click *Finish*.



14. The *Device Manager* will now update the display to show “FTS Capable NI PCMCIA-232 Communications Port”.

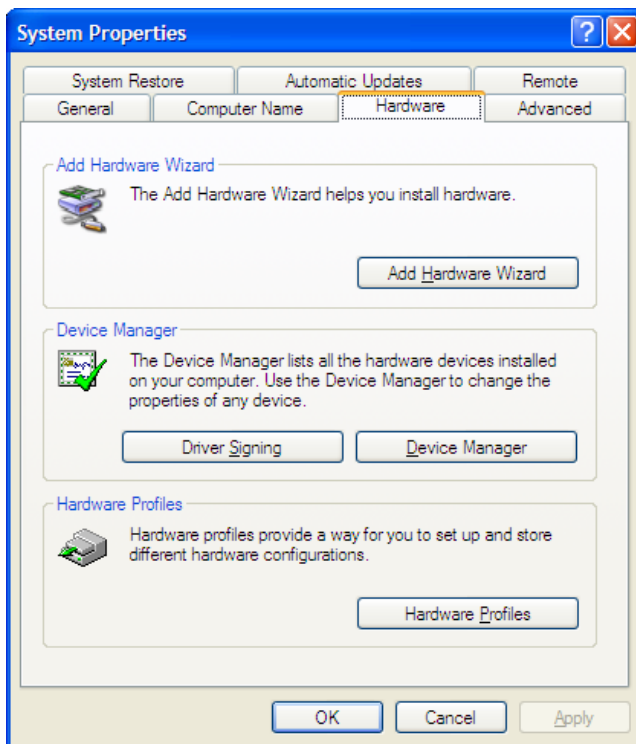
## Windows XP Instructions

The examples are for a National Instruments card, but they apply for any of the cards supported by FTS.

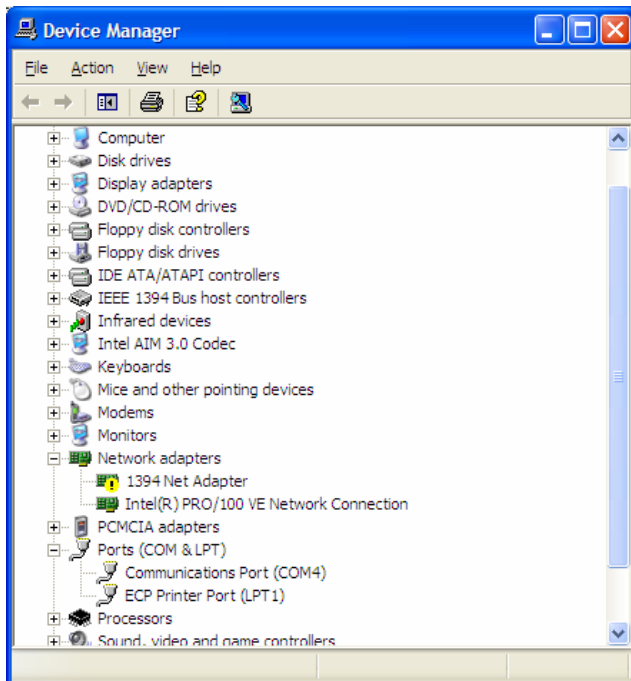
First, unzip the driver files provided. You may put them where ever you choose to; just remember where you put them.

You will use *Device Manager* to install the FTS Serial Driver.

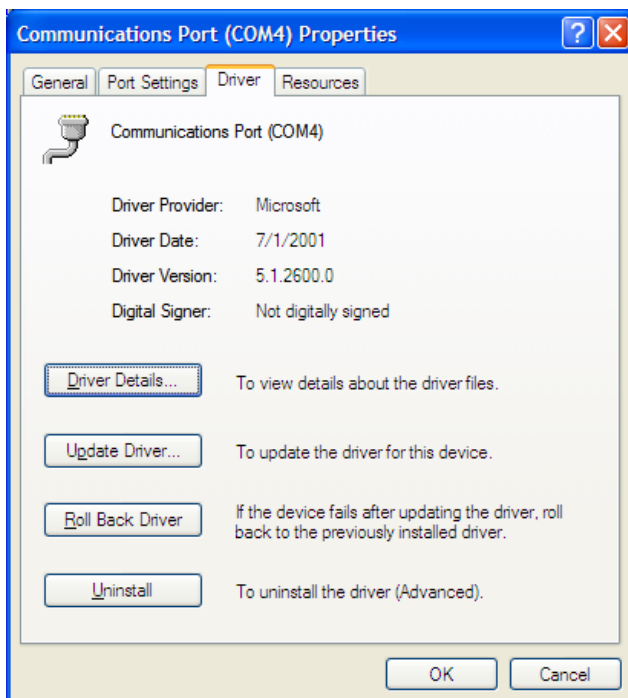
1. Open the Start menu. Open *Settings | Control Panel | System*.



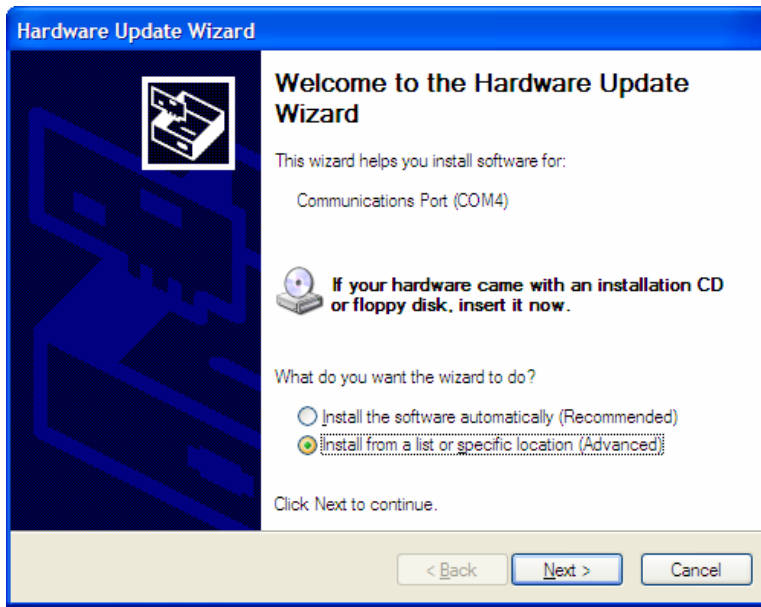
2. The *System Properties* will open. Click on the *Hardware* Tab and click *the Device Manager* Button.



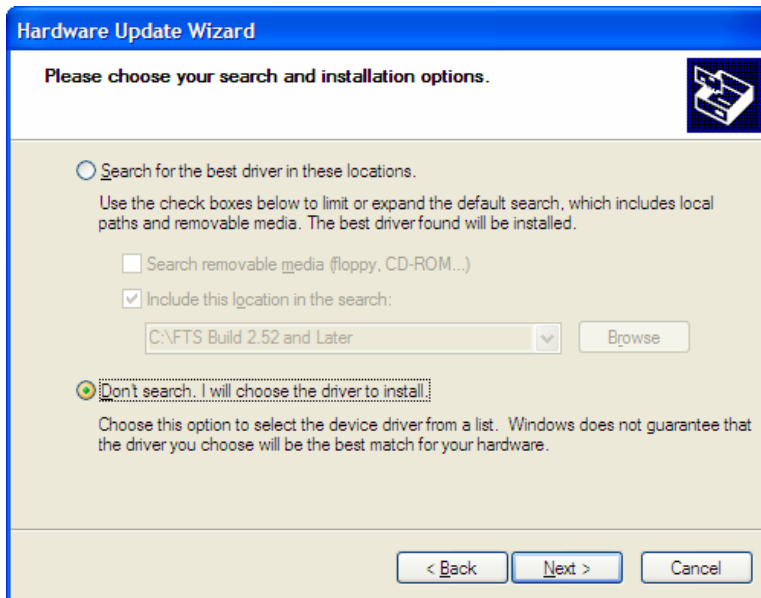
3. This will open the *Device Manager*. Double-click on *Ports* branch and double-click on the serial port you wish to switch to the FTS Driver. You can repeat these instructions for additional serial ports.



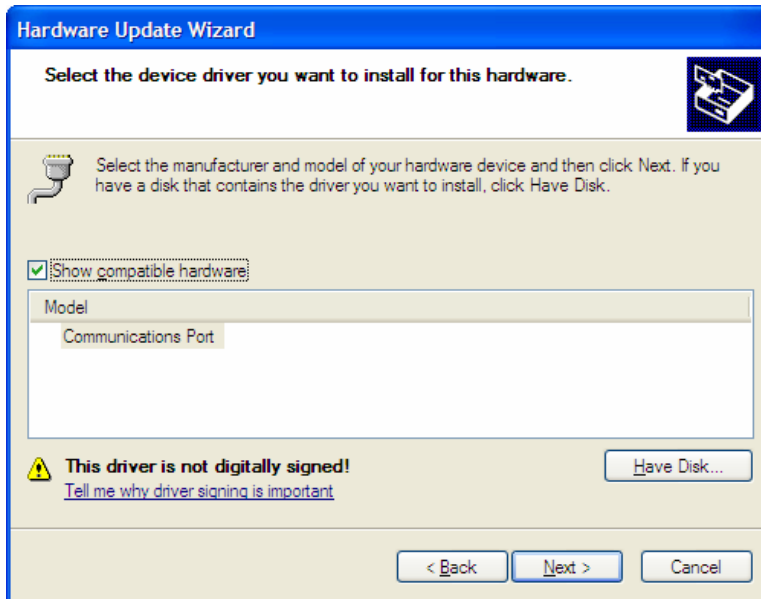
4. This will bring up the *Communication Port Properties*. Click on the *Driver* tab and click the *Update Driver* button.



5. This will bring up the *Update Device Driver Wizard*. Select “Install from a list or Specific location (Advanced)” then click *Next*.



6. Select the radio button “Don’t search I will choose the driver to install” and click *Next*.

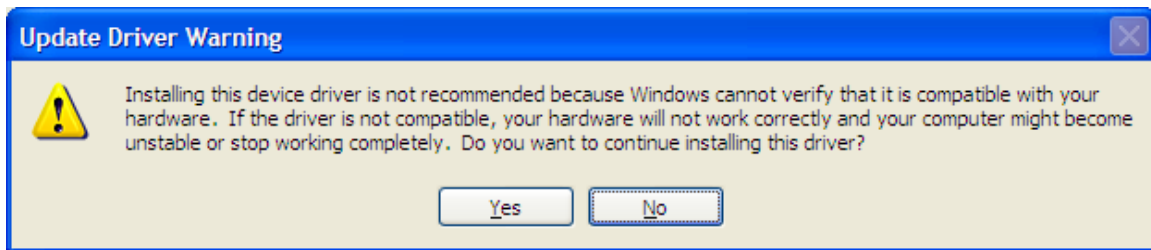


7. Click the *Have Disk* button.

8. Browse to the location of the driver. By default it is in the C:\Program Files\Frontline Test System II\[Product Name]\asynchronous driver support\[Serial Card]\fts serial driver where [Serial Card] would be Quatech for a Quatech card, National Instruments for an NI card and misc for an internal port. Click *OK*.



9. Select the driver that corresponds to your device (ISA, PCI or PCMCIA) and click *Next*.



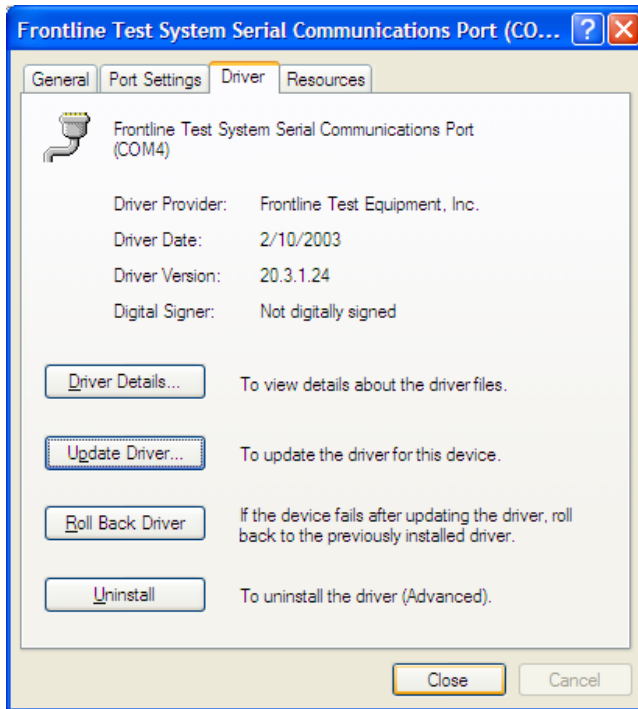
10. You may get this dialog. If you do click Yes.



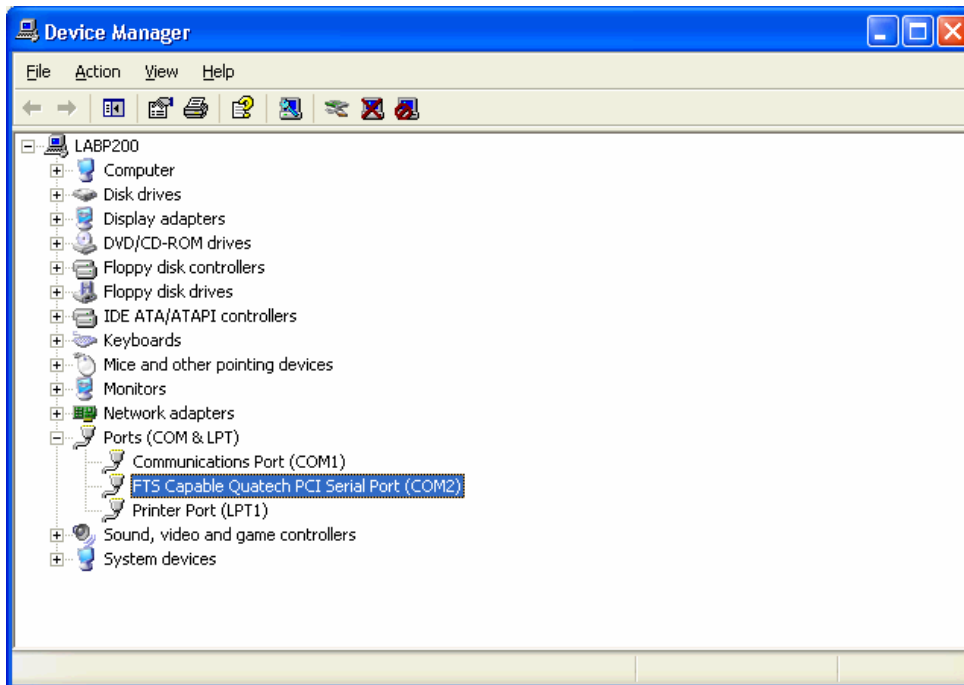
11. You may also get this dialog. Click *Continue Anyway*.



12. Click *Finish*.



13. Click *Close*.



14. The *Device Manager* will now update the display to show “FTS Capable [Manufacturer] PCI Serial Port”.