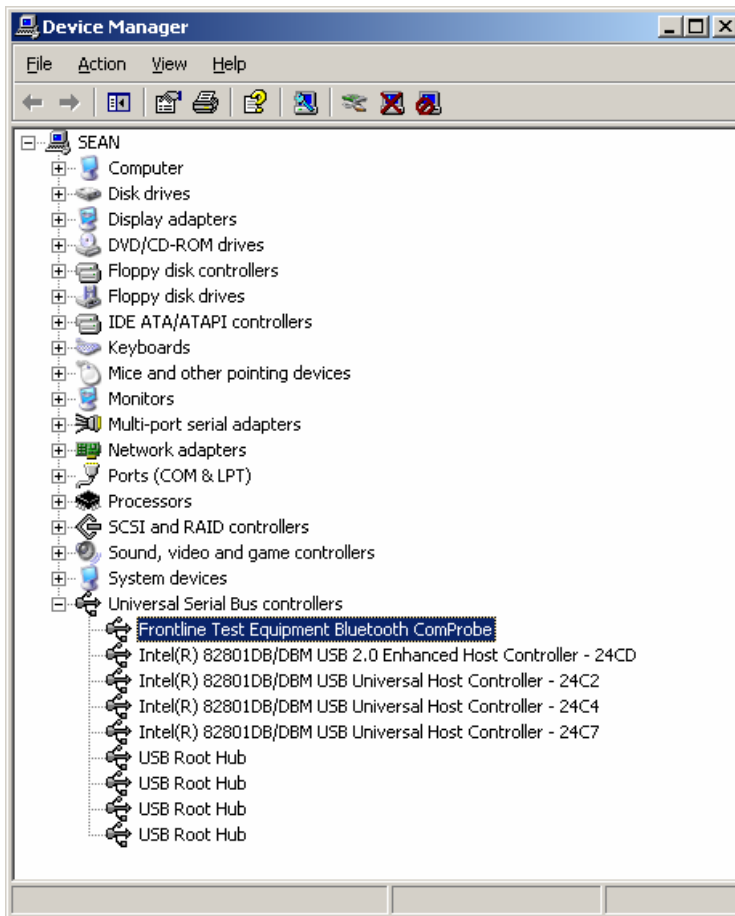


Updating Your Bluetooth ComProbe

This document assumes that your Bluetooth ComProbe has already been installed and that you are updating an existing driver. If you are installing the ComProbe for the first time, please see the instructions in your Quick Start Guide, under Hardware Installation.

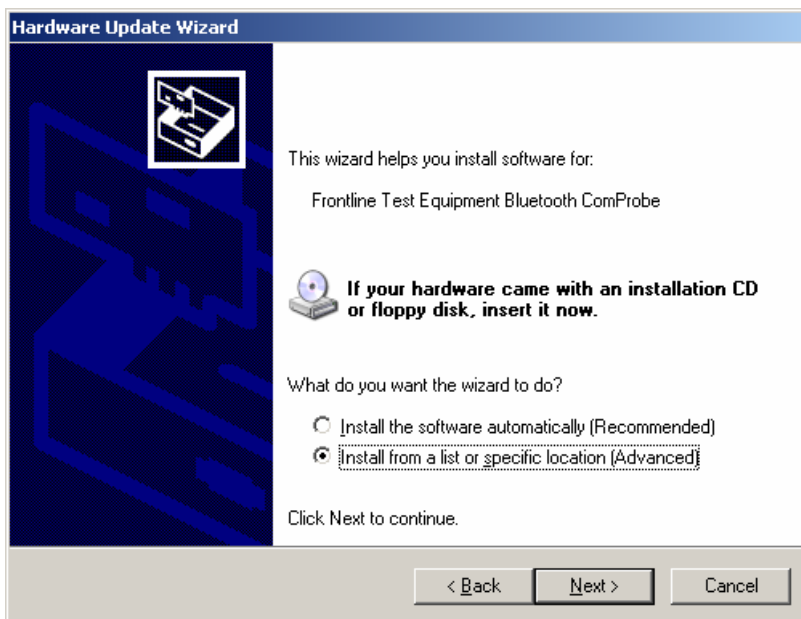
1. If you haven't already done so, plug your Bluetooth ComProbe into an available USB Port.
2. Open Device Manager (Start | Settings | Control Panel | System, click on the Hardware tab and then the Device Manager button).
3. Open the Universal Serial Bus Controllers item and select your Frontline Bluetooth ComProbe:



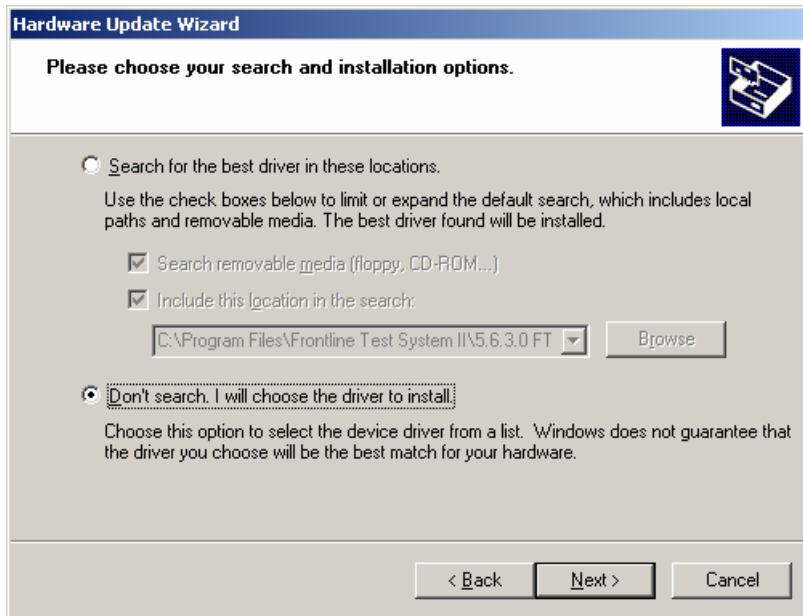
4. Right click and select Properties (or double click), select the Driver tab and click the Update Driver button.
5. If you see the following window, click "No, not this time" and click Next. Otherwise, skip to step 6.



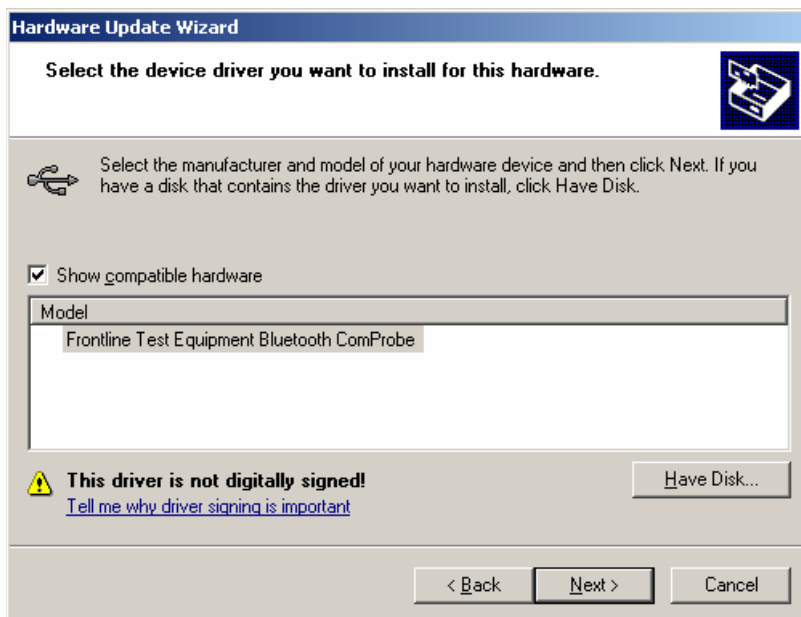
6. On the following window, choose “Install from a list or specific location” and click Next.



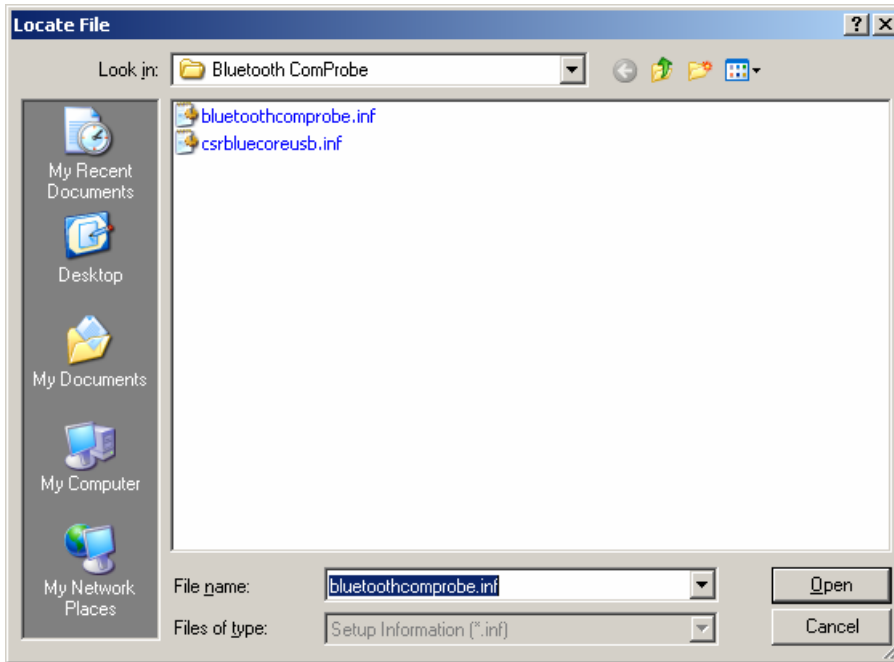
7. On the next window, choose “Don’t search. I will choose the driver to install” and click Next.



8. On the next screen, click the “Have Disk” button and the Browse button on the dialog that follows.



9. Browse to C:\Program Files\Frontline Test System II\FTS4BT Version Number\Drivers\Bluetooth ComProbe and click Open.



10. This will bring you back to the previous screen, click Next.
11. If you get a warning like the one below, click Continue Anyway.



12. When Windows is done copying, click Finish.
13. In order for the new driver to take effect, reboot your PC.