

Frontline® BPA® 600

Dual Mode Bluetooth® Protocol Analyzer



Key Features and Benefits

- **Ultra-Portable**
USB-powered and tiny footprint means you decide where and how to work
- **Greatest Possible Accuracy ProbeSync™**
technology synchronizes timestamps between multiple devices and technologies
- **Faster Debugging**
Bluetooth low energy and Classic Bluetooth data is displayed in a single graphical user interface
- See events as they occur through live decoding and decryption of encrypted data
- Bluetooth Audio Expert System, included as standard, for root cause analysis of Bluetooth-related audio issues
- **Maximum Flexibility**
DecoderScript lets you specify decodes for custom protocols
- Supports low energy features through Bluetooth 4.2 except optional extended packet length
- **Roleless Single/Multi Connections**
No longer need to specify which device is master and slave
- Follow pairing and decrypt encrypted traffic including Secure Simple Pairing
- **Pre-Connection Traffic**
See pre-connection paging, response, polling, FHS and acknowledgement packets, and visibility into all three advertising channels concurrently

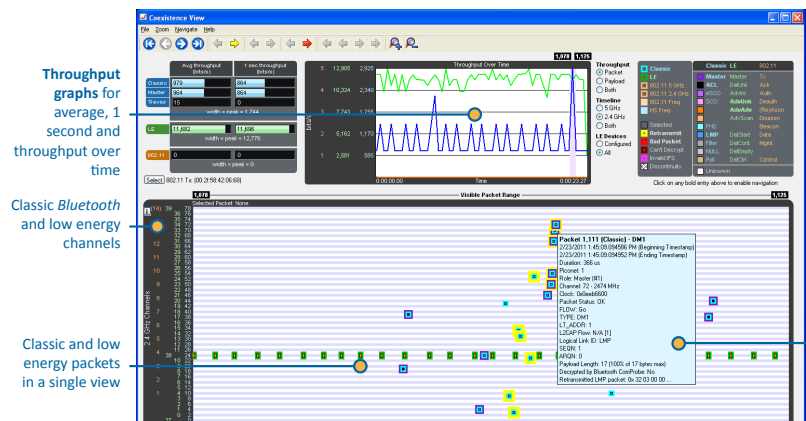
The Frontline® BPA® 600 Dual Mode Bluetooth® Protocol Analyzer combines low energy and BR/EDR data in the same intuitive displays, simplifying and accelerating the debugging process, while ProbeSync makes it possible for developers to view Bluetooth and 802.11 data, locked together and displayed in one comprehensive coexistence view.

Developers can unplug from the AC outlet and take their testing and development operations where these technologies actually live - the real world. Running on USB power and smaller than a paperback book, the Frontline BPA 600 lets you decide how and where to work.

Portability is only the beginning - the powerful BPA 600 features:

- role-less single and multi connections, which no longer require the user to specify which device is the master and which is the slave
- decryption of multiple connections
- automatic programmable link key insertion to BPA 600 from 3rd party software tools or debug applications, and link key now reverses automatically when necessary
- support for CSRMESH and Bluetooth mesh technology
- Bluetooth Audio Expert System for pinpointing Bluetooth-related audio issues
- Supports low energy features through Bluetooth 4.2 except optional extended packet length

Want to see pre-connection traffic? The BPA 600 shows it to you. Paging, response, polling, FHS and acknowledgement packets are captured and displayed as they happen.



Tooltips with comprehensive packet details



Specifications

Supported Systems

- OS Supported: Windows 7, 8 and 10
- USB Port: USB 2.0 or USB 3.0 High-Speed

Minimum System Requirements

- Processor: Core i5 processor at 2.7 GHz
- RAM: 4 GB
- Free Hard Disk Space: 20 GB

Bus Type

- USB 2.0 Mini B, compatible with USB1.1

Operating Frequencies

- 2402 MHz – 2480 MHz

Effective Receiver Sensitivity (conducted, not radiated)

- -90.0 dBm for GFSK

Power

- USB

Dimensions

- 5" X 2.75" X 1.0625" (127mm X 70mm X 27mm)

Weight

- 0.44lb / 200g

Temperature

- Storage Temperature: 0° to 65° Celsius (32° to 149° Fahrenheit)
- Operating Temperature: 5° to 55° Celsius (41° to 131° Fahrenheit)

Humidity

- Operating: 10% to 90% RH (noncondensing)

Debugs every Bluetooth Profile and Protocol, including

3DPS	FTP	HFP
A2DP	GAVDP	HID
AVRCP	GNSS	HSP
BIP	GOEP	MAP
BPP	HCRP	MPS
DI	HDP	OPP
DUN		PAN

Core Specifications: All through Bluetooth 4.2 Classic Profiles

Low Energy Services:

- Alert Notification
- Battery
- Blood Pressure
- Cycling Power
- Cycling Speed and Cadence
- Current Time
- Device Information
- Glucose
- HID
- Heart Rate
- Health Thermometer
- Immediate Alert
- Link Loss
- Location and Navigation
- Next DST Change
- Phone Alert Status
- Reference Time Update
- Running Speed and Cadence
- Scan Parameters
- Tx Power

Low Energy Profiles:

- Alert Notification
- Blood Pressure
- Cycling Power
- Cycling Speed and Cadence
- Find Me
- Glucose
- HID over GATT
- Heart Rate
- Health Thermometer
- Location and Navigation
- Phone Alert Status
- Proximity
- Running Speed and Cadence
- Scan Parameters
- Time

PREMIUM MAINTENANCE - Frontline BPA 600

Premium Maintenance for Frontline BPA 600 Bluetooth Protocol Analyzer ensures that your product is up to date with the latest software updates and features. Your Frontline BPA 600 product comes with one year of Premium Maintenance and includes:

- Updates addressing changes to the supported Bluetooth Specifications
- New software features
- New decodes
- Product bug fixes

Ordering Information

Product Description

BPA 600 Dual Mode Bluetooth Protocol Analyzer
Frontline Coexistence BPA 600 (Dual Mode Bluetooth Protocol Analyzer and 802.11 a/b/g/n Protocol Analyzer)

Product Code

2014-11000-002
2014-15110-000

To order or for more information:

www.fte.com
frontline_onlinesales@teledyne.com
1.800.359.8570 US & Canada
+1.434.984.4500
Fax: 434.984.4505



TELEDYNE LECROY
Everywhereyoulook™