

Serialtest ComProbe Installation Instructions

Before you can install the Serialtest software, you must install the drivers for an authorized Serialtest ComProbe. For the Serialtest software, the authorized ComProbe could be either the RS-232 ComProbe II or the RS-422/485 ComProbe. In the rest of this document, 'Serialtest ComProbe' refers to either of those two devices.

An authorized Serialtest ComProbe is one that contains the files that identify it as having Premium Maintenance installed. Follow the steps below to install the driver.

There are two install procedures for the Serialtest ComProbe: one for Windows **XP** and one for **Windows 7**.

Serialtest ComProbe Installation on Windows XP

1. Insert the product CD into the PC.
2. Plug the *ComProbe* into a *USB* port.

The *Found New Hardware Wizard* dialogue box appears.



Figure 1 Install Wizard Welcome

3. Choose *No, not this time*
4. Click *Next*.



Figure 2 Found New Hardware Wizard Dialog

5. Choose *Install from a list or specific location*
6. Click *Next*.

Now you have to locate the Serialtest ComProbe driver.

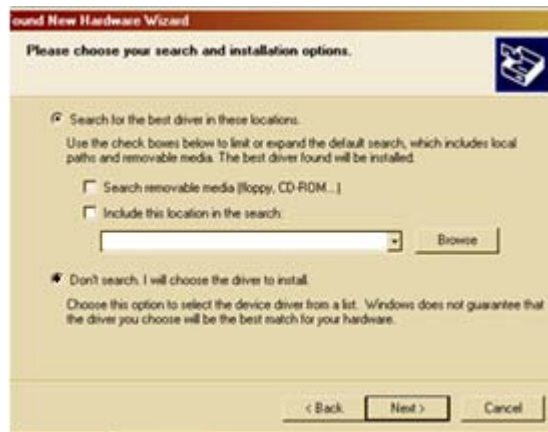


Figure 3- Browse

7. Select *Don't search, I will choose the driver to install.*
8. Click *Next*.

The next *Found New Hardware Wizard* dialog appears.

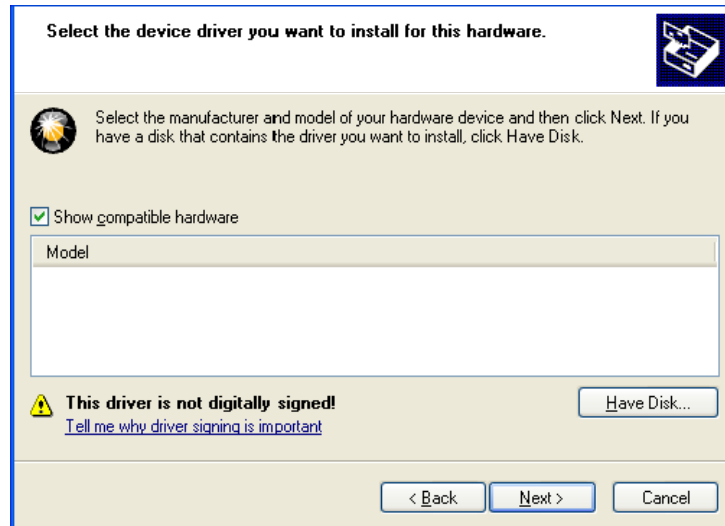


Figure 4 - Directory Structure

9. Select *Have Disk*.

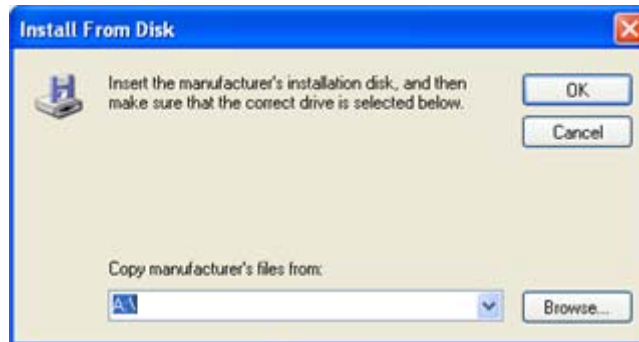


Figure 5 - Install From Disk

Now you have to locate the driver for your ComProbe.

10. Select *Browse*.

The driver is located on your product CD at: **Serialtest\Drivers\Serial ComProbe.** . This directory contains the Windows driver information file needed to install the driver.

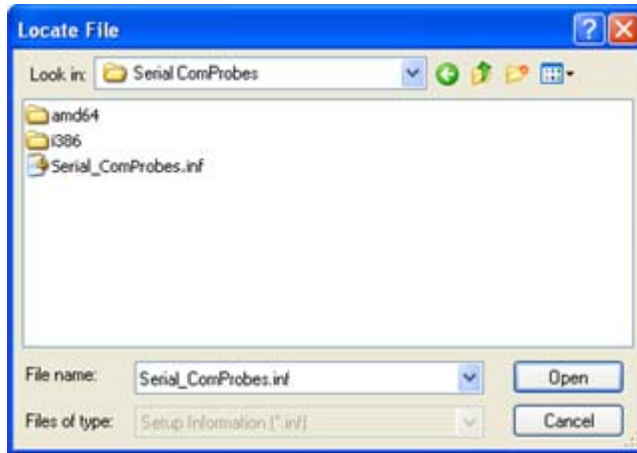


Figure 6 - Locate File

11. Select the *Serial_ComProbes.inf*.
12. Click *Open*.



Figure 7 - Install From Disk

Back at the previous dialog the location of the directory you just chose appears in the text box next to the Browse button.

13. Select *OK* to continue the installation.

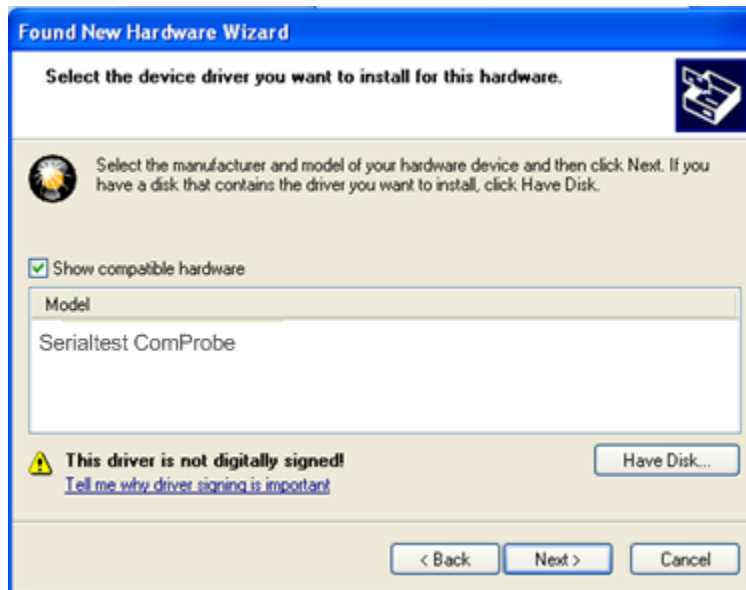


Figure 8 - Select ComProbe

The name of the ComProbe will be displayed under **Model**.

Note: If Frontline ComProbe is the only device listed, you do not have to select a model. If other devices are listed, you must select the model before selecting Next.

14. Select *Serialtest ComProbe* under **Model**.
15. Click the *Next* button to continue the installation.

Note: If you get a dialog box questioning the software integrity, don't worry—Click *Continue Anyway*.

Your computer will now install the Serial ComProbe driver from the directory you selected; you'll get a dialog box saying that the installation is finished.



Figure 9 - Finished Installation

16. Click the *Finish* button to close the wizard.

The installation of the Serialtest ComProbe driver is now complete.

Your computer will remember this USB application. The next time you insert the Serialtest ComProbe , it will automatically find the appropriate interface driver.

Serialtest ComProbe Driver Installation on Windows 7

The procedure for installing the ComProbe driver is different on Windows 7 than it is for XP. Follow the steps below.

1. Insert the *product CD* into the PC.
2. Plug the *ComProbe* into a USB port.

Note: Depending on how your PC is set up, you will either see a message indicating that the driver software was not installed, or that it was installed successfully. Whatever the case:

3. Close the dialog.
4. Go to the Control Panel and open the *Device Manager*.

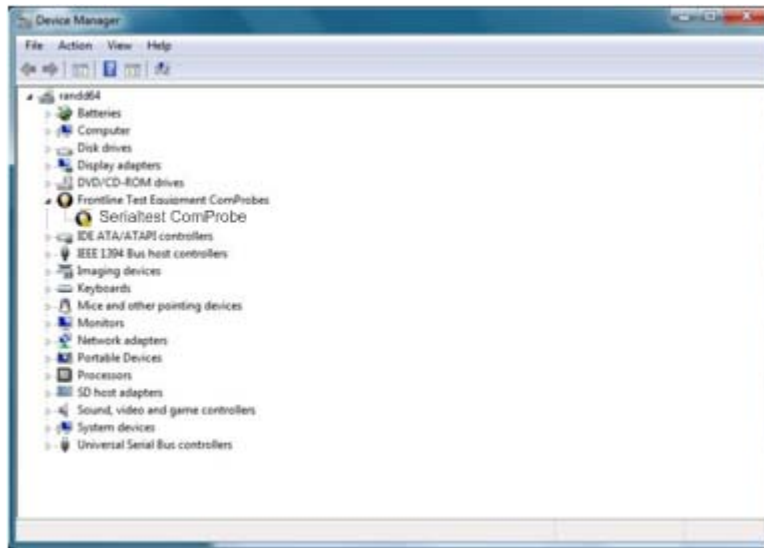


Figure 10 - Device Manager

5. Right click on *Serialtest ComProbe* under *Frontline Test Equipment ComProbes* and select *Update Driver Software*.

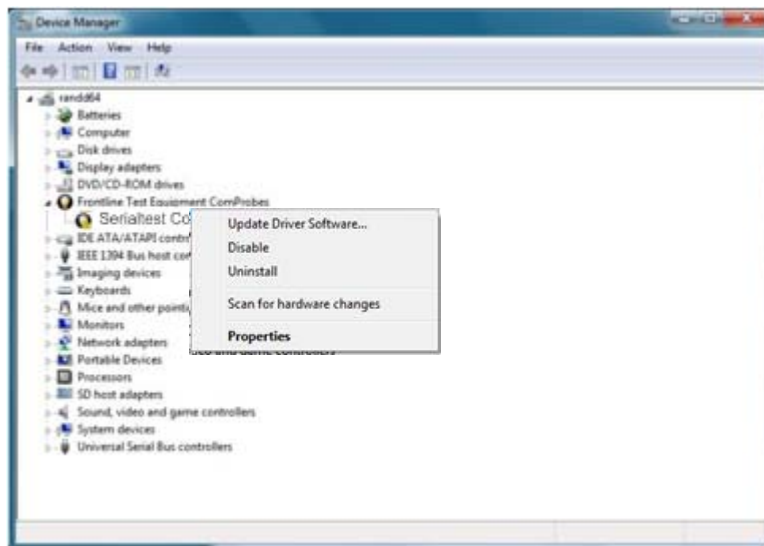


Figure 11 - Update Driver Software

The next step is to choose the driver location.

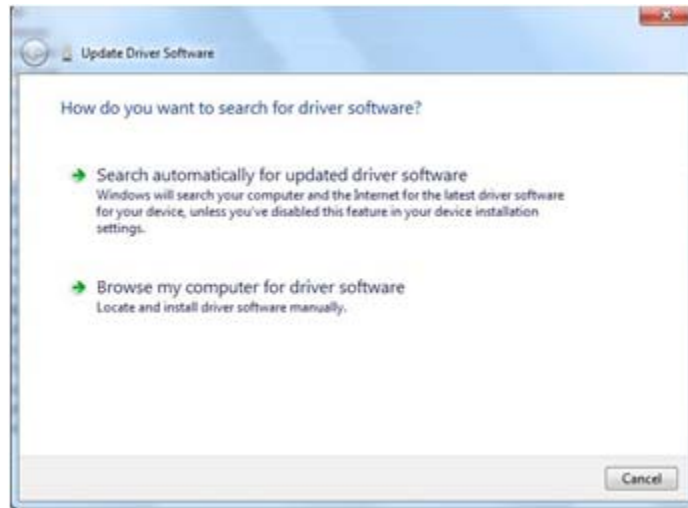


Figure 12 - Browse my computer...

6. Select *Browse my computer for driver software*.



Figure 13- Let me pick...

7. On this dialog, select *Let me pick from a list of device drivers on my computer*.

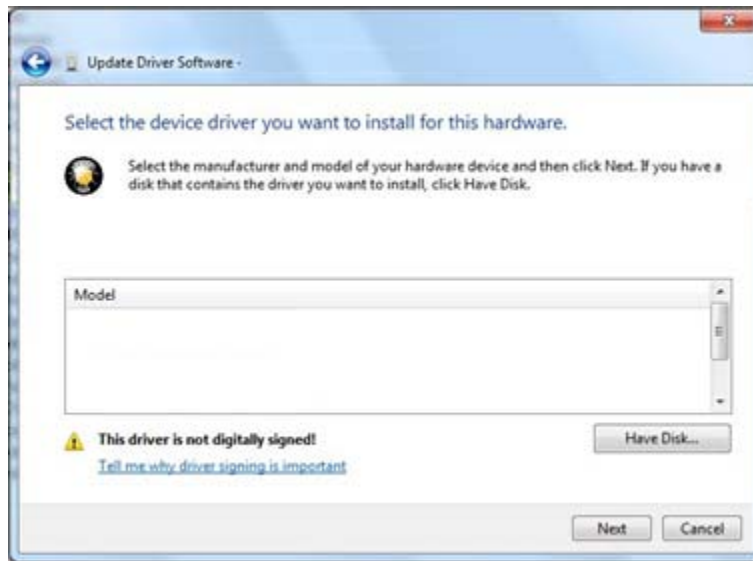


Figure 14 - Have Disk

8. Select *Have Disk*.

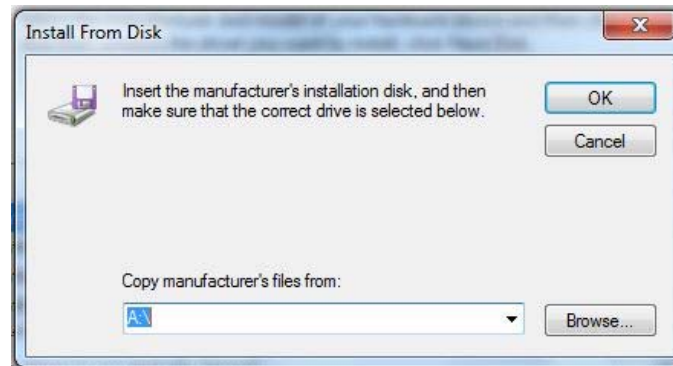


Figure 15 - Install From Disk

9. On the **Install From Disk** dialog select *Browse*.

The driver is located on your product CD at: **Serialtest\Drivers\Serial ComProbe**. This directory contains the Windows driver information file needed to install the driver.

10. Open the *Serial ComProbes* folder

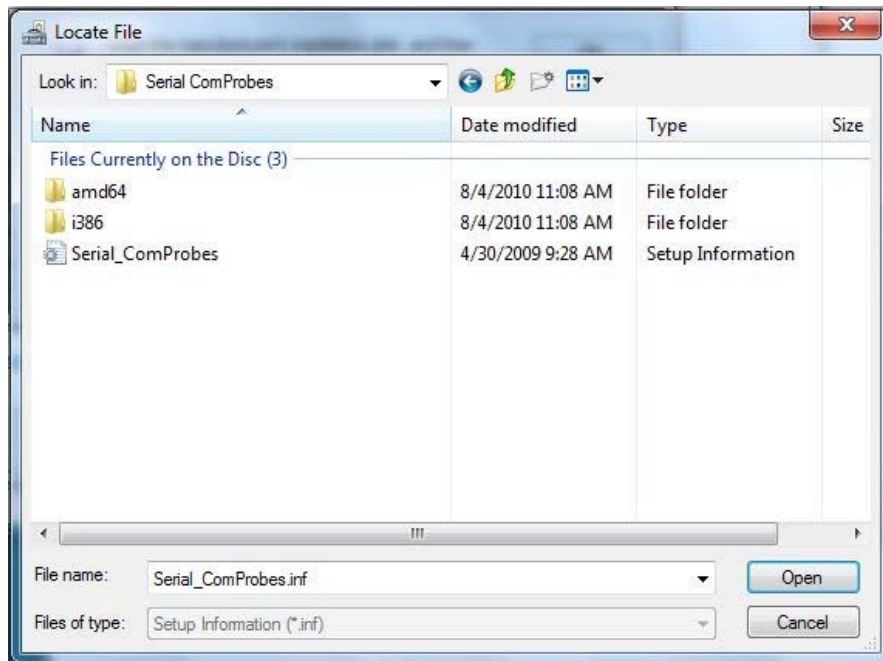


Figure 16 - Serial ComProbe Folder

- 11. Click on the *Serial_ComProbes* file
- 12. Select *Open*.

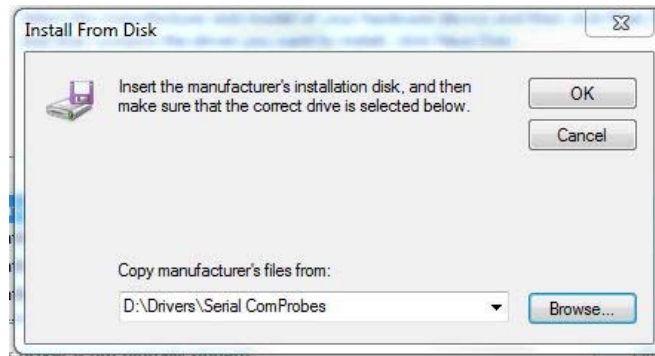


Figure 17 - Install From Disk

- 13. On the **Install From Disk** dialog select *OK*.

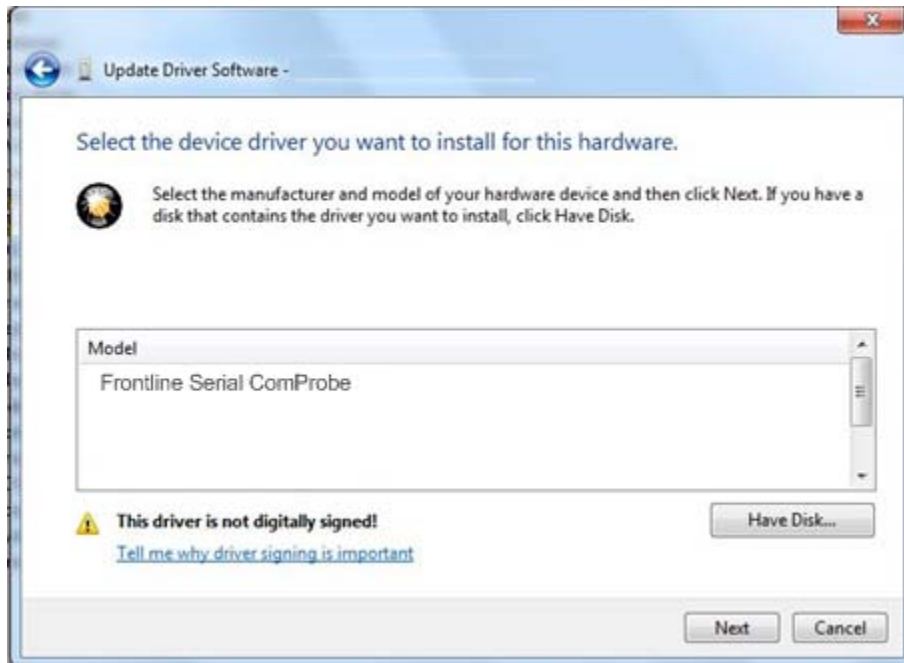


Figure 18 - Select Model

14. Select *Frontline Serial ComProbe* under **Model**.

Note: If Frontline Serial ComProbe is the only device listed, you do not have to select a model. If other devices are listed, you must select the model before selecting Next.

15. Then select *Next*.

Once the driver starts to load,

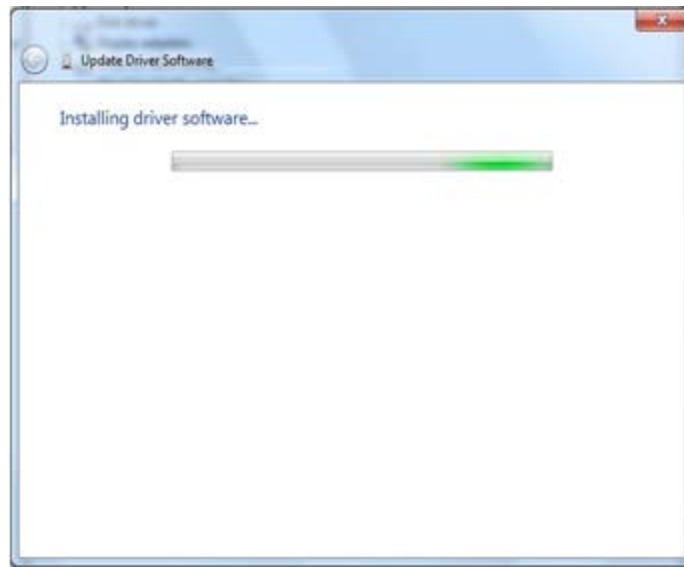


Figure 19 - Software Loading - Win7

you may get a Windows Security warning.

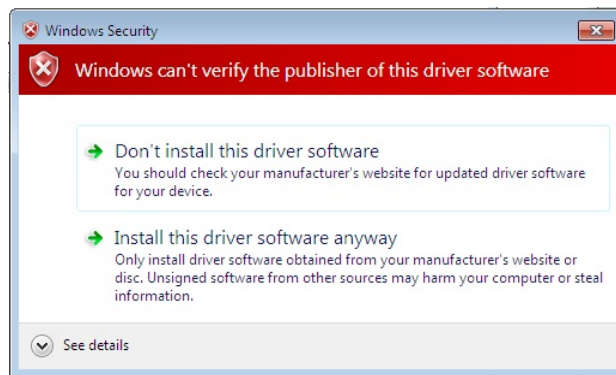


Figure 20- Windows Security Warning

16. You can ignore this warning by selecting **Install this driver software anyway**.

Your computer will now install the ComProbe driver from the directory you selected; you will get a dialog box saying that the installation is finished.



Figure 21 - Installation Complete

17. Click the *Close* button to close the wizard.

Software Installation

When you have finished installing the ComProbe drivers, simply select Install Serialtest from the installer.



If you have any questions about the installation, please refer to the installation and activation instructions in **How to Install Serialtest**.

The installation of your FTS product creates a folder on your desktop.

1. Open the desktop folder and double-click the shortcut labeled *Frontline Serialtest*.
2. FTS displays the *Choose Protocol to Analyze* dialog that contains a list of the available protocols.
3. Expand the folder containing the desired protocol and select the protocol stack.
4. Select a capture method from the *Data Capture Method* selection pane below the list window (if necessary).
5. Check the *Create Shortcut When Run* checkbox if you like and click the *Run* button (if you choose to create a shortcut, the system creates one and places it in the desktop folder).

Alternatively, you can access the *Choose Protocol to Analyze* dialog from your Windows operating system by clicking *Start / Programs / Serialtest [version#] | Serialtest*. Then select the protocol from the displayed list. Consult the online Help for additional information on choosing protocols.

Copyright © 2000-2010 Frontline Test Equipment, Inc. All rights reserved. You may not reproduce, transmit, or store on magnetic media any part of this publication in any way without prior written authorization of Frontline Test Equipment, Inc.

FTS, Frontline, Frontline Test System, and ComProbe are registered trademarks of Frontline Test Equipment, Inc. FTS4BT is a trademark of Frontline Test Equipment, Inc.

The Bluetooth SIG, Inc. owns the *Bluetooth* word mark and logos, and any use of such marks by Frontline is under license.

All other trademarks and registered trademarks are property of their respective owners.